

Natural Gas Assessment of the Arkoma Basin, Ouachita Thrust Belt, and Reelfoot Rift

Arkoma Basin Shale Gas Assessment Units

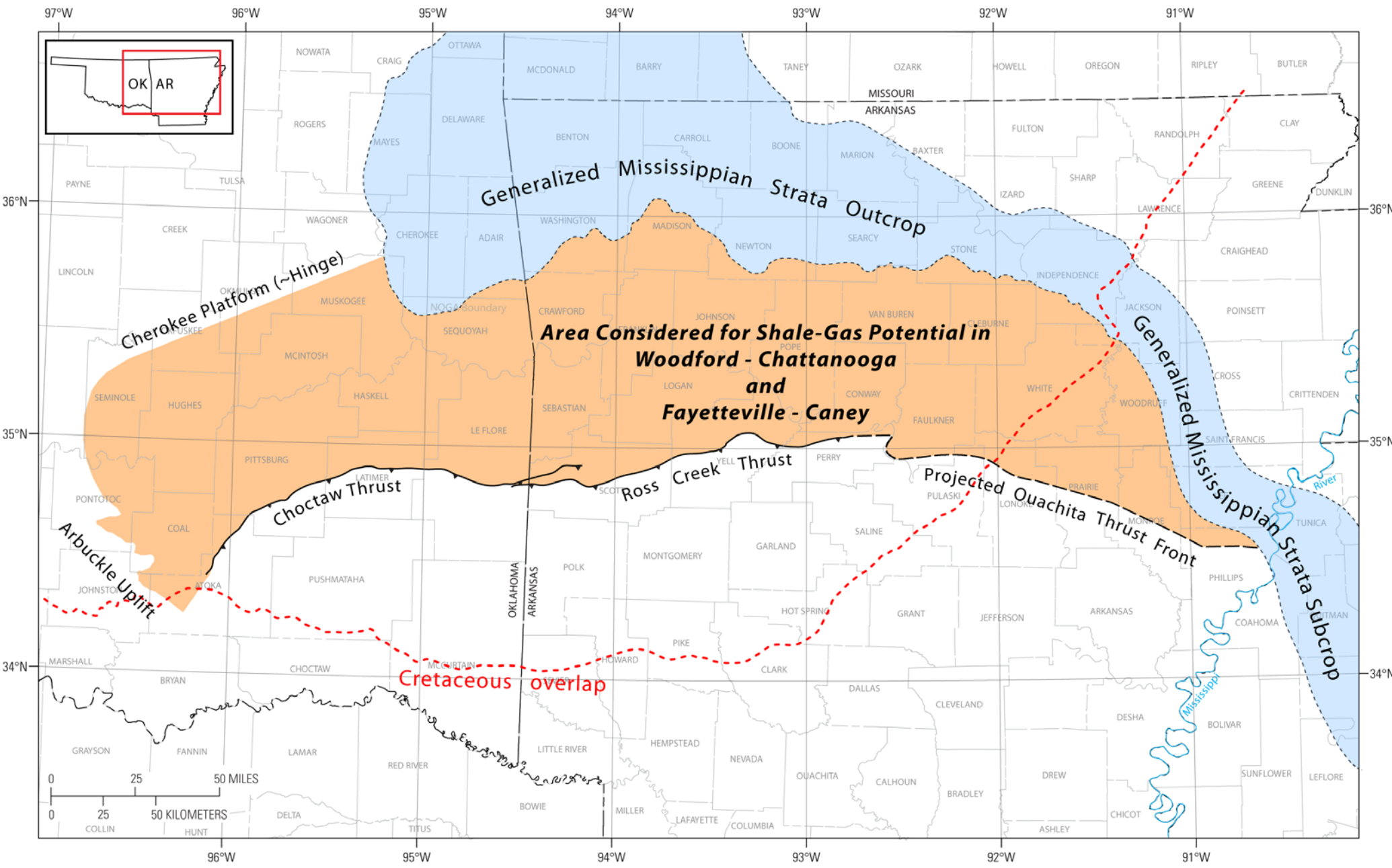


Dave Houseknecht & Bob Milici

U.S. Department of the Interior
U.S. Geological Survey

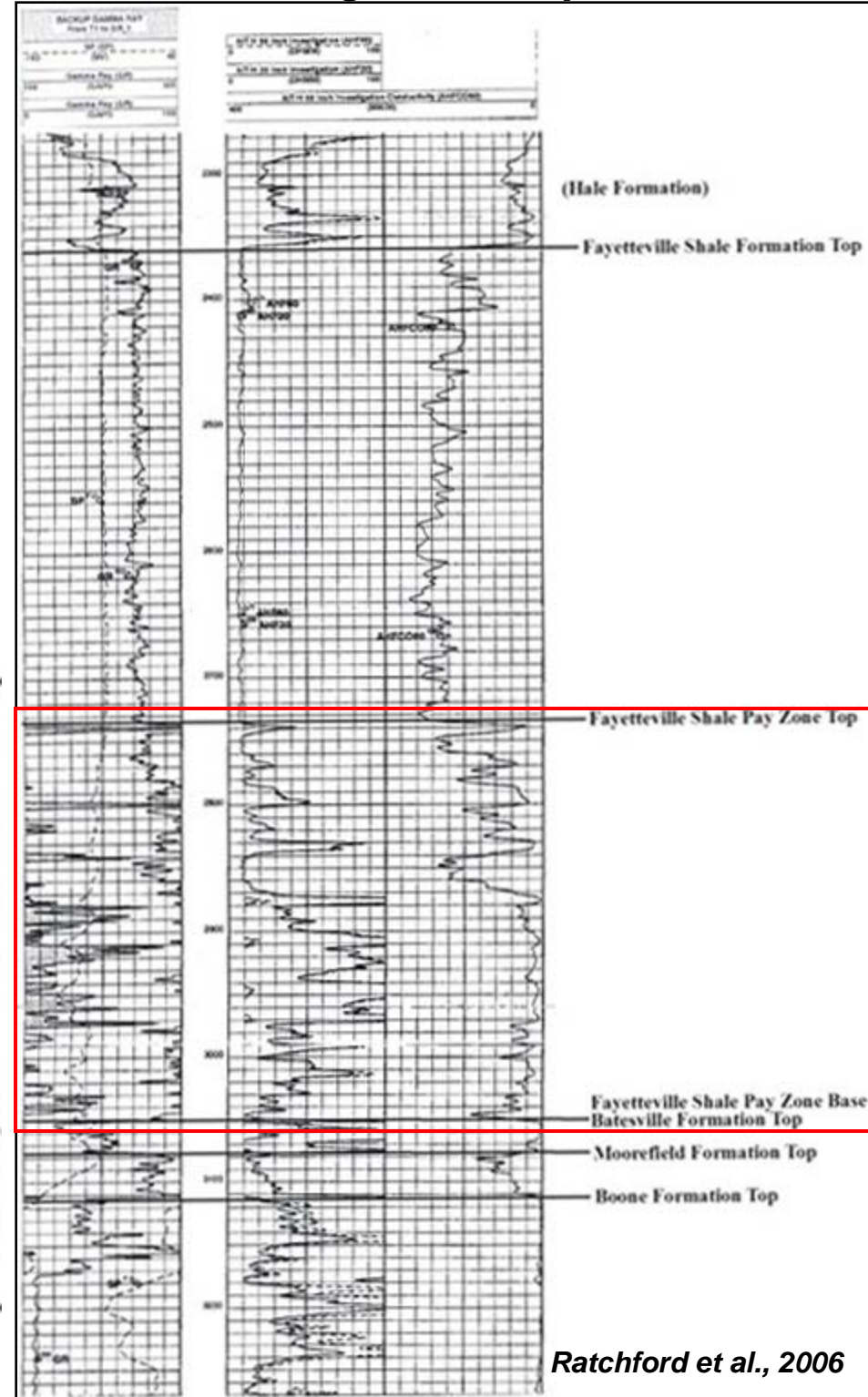
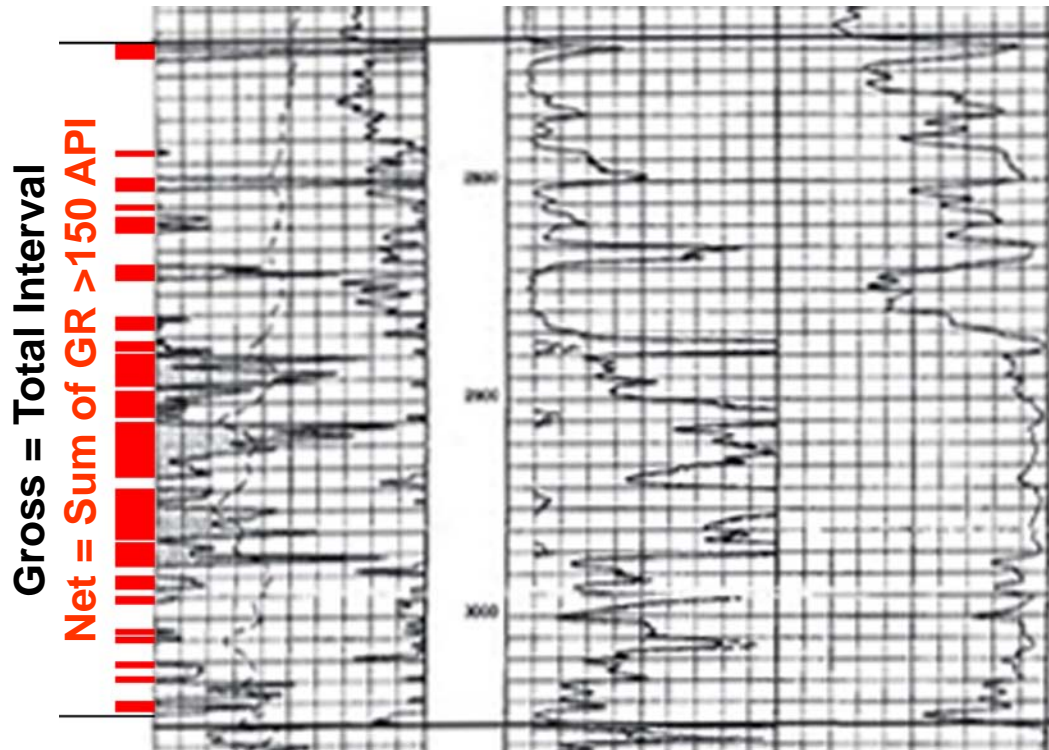
Photo by Stan Paxton, USGS

Defining Shale-Gas Assessment Units – *Delineate Area to be Considered*



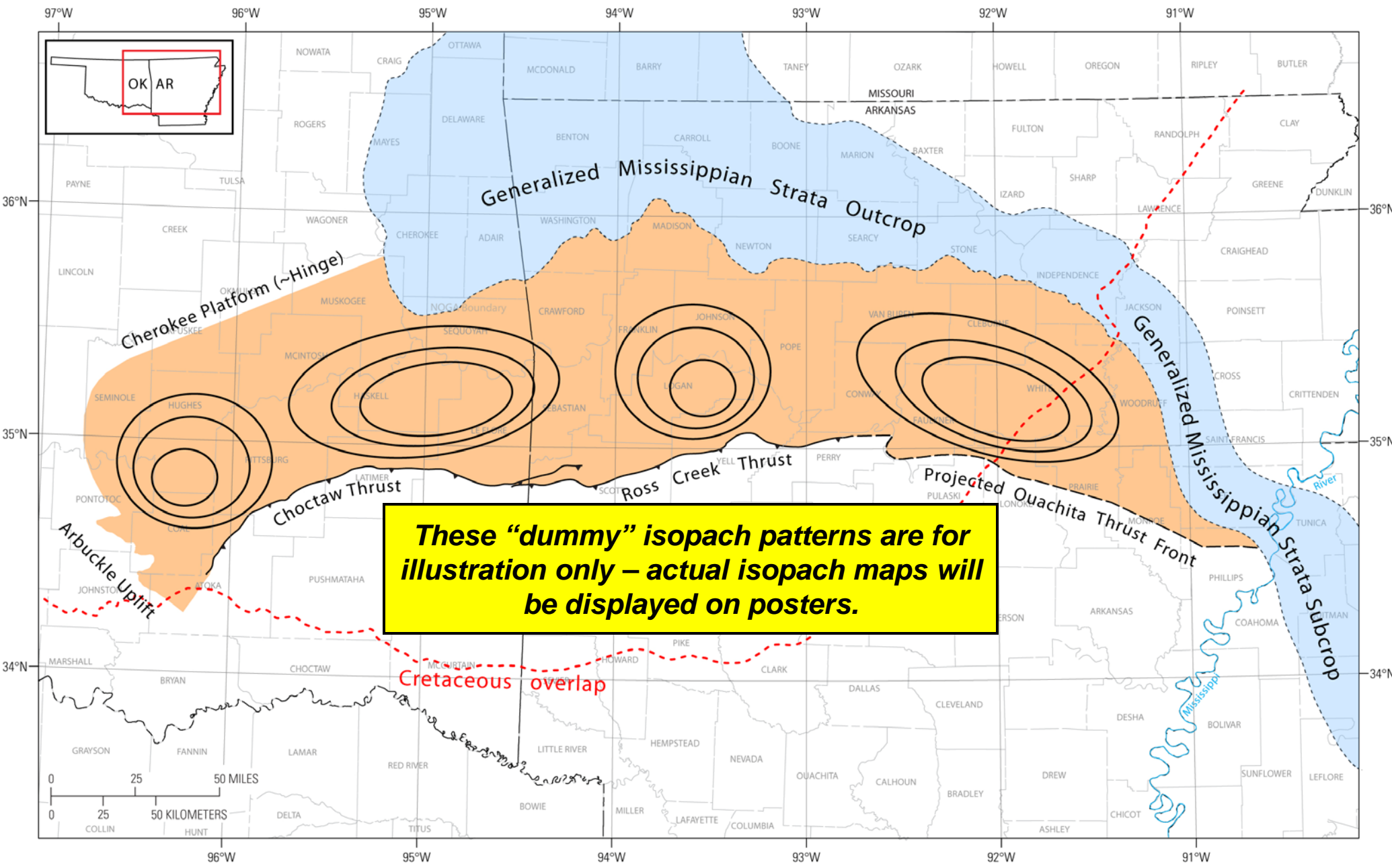
Defining Shale-Gas Assessment Units – Map Gross & Net High-GR Response

Measure & Map GROSS and NET gamma-ray response >150 API as a proxy for shale-gas potential



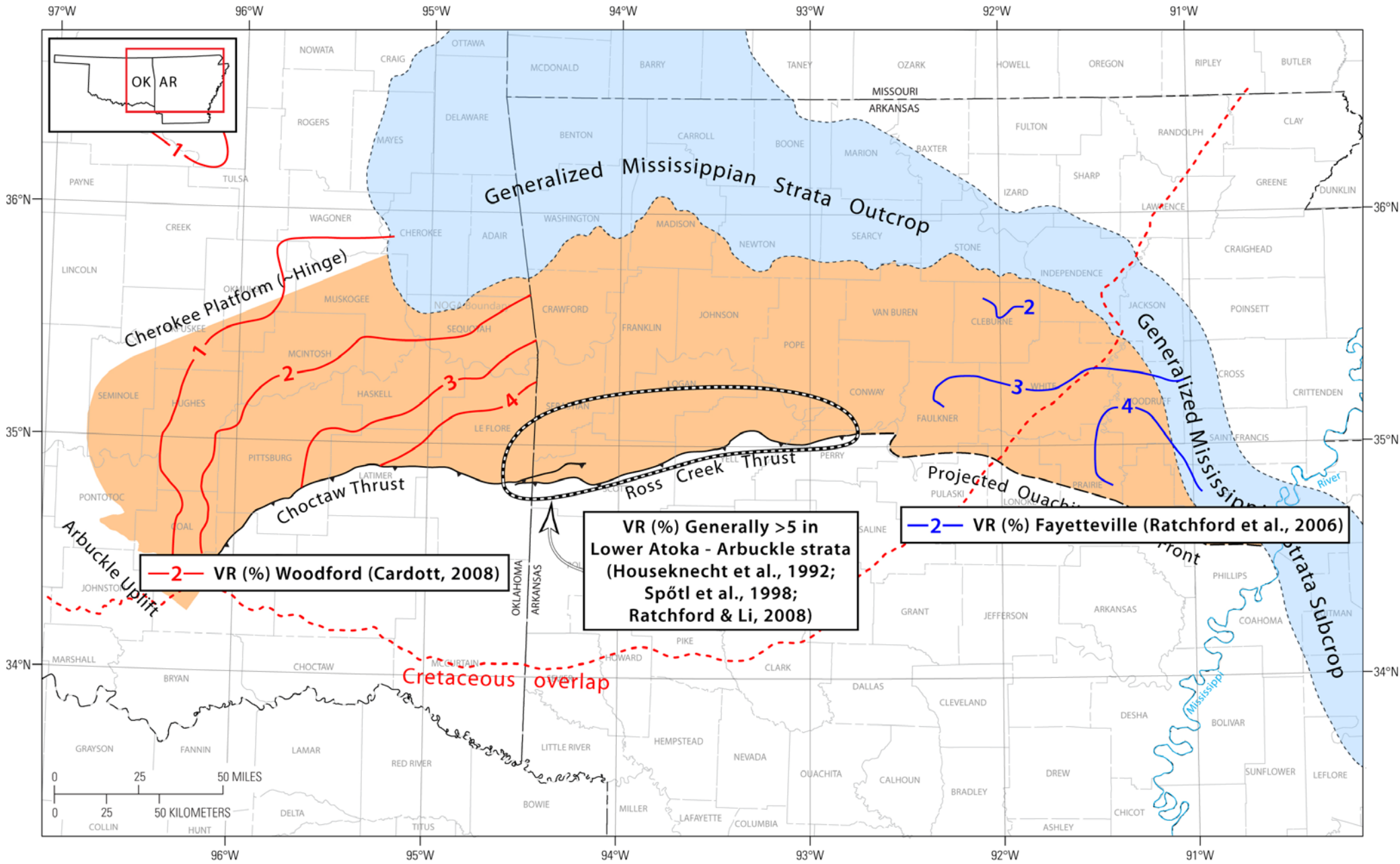
Ratchford et al., 2006

Defining Shale-Gas Assessment Units – Isopach Gross & Net High Gamma-Ray

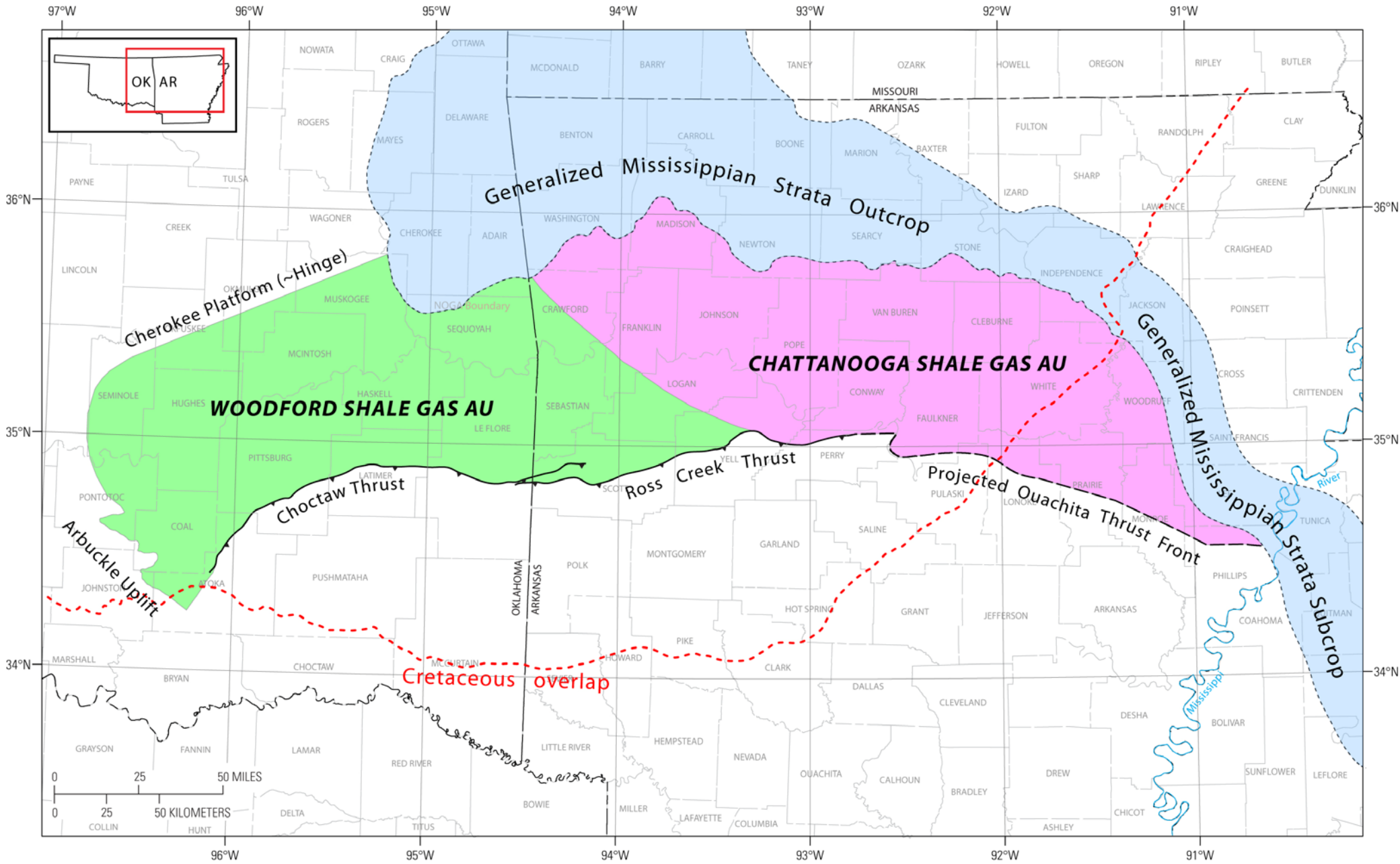


These "dummy" isopach patterns are for illustration only – actual isopach maps will be displayed on posters.

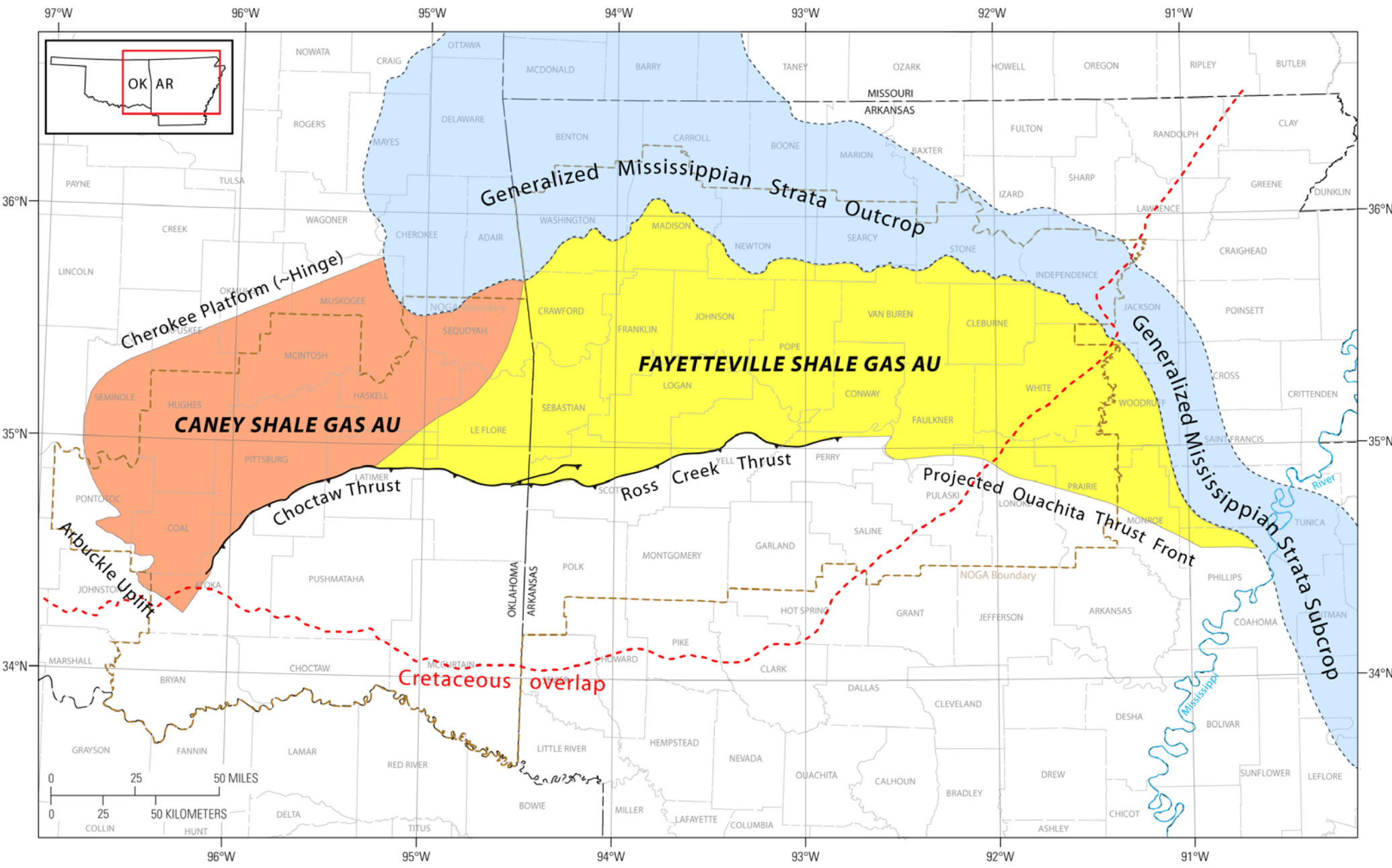
Defining Shale-Gas Assessment Units – *Overlay Thermal Maturity Information*



Woodford and Chattanooga Shale Gas Assessment Units



Fayetteville and Caney Shale Gas Assessment Units



Subdivision of Shale Gas Assessment Units

